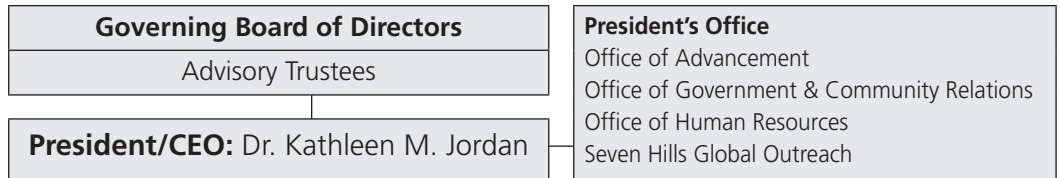


# Table of Organization



**Executive Vice President/Chief Operations Officer: Sophie Santaella**

Office of Data Analytics and Quality Enhancement	Seven Hills Research Center
--	-----------------------------

## ■ Child & Family Services Cluster

- Adoption & Family Services
- Advocacy
- Assistive Technology
- Bullying Prevention (BRACE)
- Center for Childcare Careers
- Child Care Resources
- Child Enrichment Center
- Children's Behavioral Health Initiative
- Community Service Agency
- Dental Services
- Department of Youth Services (DYS) Community Services
- Divorce Mediation
- Early Childhood Services
- Early Education & Care Center
- Early Intervention
- Educational Programs for At-Risk Youth
- Family Resource Centers
- Family Child Care
- Family Networks
- Family Stabilization
- Family Support Centers
- Grief Support
- Home-Based Therapeutic Services (HBTS)
- Individual & Family Therapy
- In-Home Therapy
- LTSS Care Coordination
- Medically Complex Residential Options
- Personal Assistance Services & Supports (PASS)
- Psychiatry
- Psychological Assessment & Testing
- Psychopharmacology Management
- Short-Term Post-Hospitalization
- School-Based Counseling
- Short-Term Respite Care
- Substance Abuse Counseling & Intervention
- Therapeutic Mentoring
- Therapeutic Supervised Visitation
- Tobacco Services
- Wetzel Center for Children

## ■ Clinical & Behavioral Health Cluster

- ADVANCE Behavioral Health Professional Development
- Alzheimer's Supports
- Applied Behavior Analysis
- Behavioral Health Centers
- Brain Injury Supports
- Child & Family Counseling
- Children's Behavioral Health Initiative
- Clinical Supports
- Dental Services
- Driver Alcohol Education
- Employee Assistance Program
- Food Pantry
- Group Counseling
- HIV/AIDS Services
- Home-Based Counseling
- Home-Based Therapeutic Services (HBTS)
- Individual & Family Therapy
- In-Home Therapy
- LTSS Care Coordination
- Long-Term Care
- Loss & Trauma
- Mediation Services & Training
- Medically Complex Residential Options
- Mental Health Counseling
- Nursing
- Occupational Therapy
- Peer Counseling Support
- Personal Assistance Services & Supports (PASS)
- Psychiatry
- Psychological Assessment & Testing
- Psychopharmacology Management
- Short-Term Post-Hospitalization
- School-Based Counseling
- Short-Term Respite Care
- Substance Abuse Counseling & Intervention
- Therapeutic Mentoring
- Therapeutic Supervised Visitation
- Tobacco Services
- Wetzel Center for Children

## ■ Community Supports Cluster

- Adult Companion Care
- Adult Day Health
- Adult Family Care
- Adult Residential Supports
- Adventure Challenge Experience
- Advocacy
- Agency with Choice
- Alternative to Lockup
- Assistive Technology
- Autism Specialized Services
- Brain Injury Supports
- COOL Schools
- Career Pathways
- College Success Services
- Community-Based Day Support
- Community Service Agency
- Cultural Inclusion
- Day Habilitation
- Department of Youth Services (DYS) Community Services
- Dynamy Youth Academy
- Emergency Respite
- Family Support Centers
- Flex Funding
- Grafton House for Young Women
- Home Care
- Individual Supports & Community Habilitation
- LTSS Care Coordination
- Medically Intensive Homes
- Open Door Galleries
- Oxford House for Adolescent Boys
- Peer Counseling Support
- RSVP Volunteers
- Recreation Services
- Respite Support
- Senior Companion Program
- Senior Fraud Prevention
- Shared Living/Shared Home Supports
- Teen Parent Supported Living
- The Village Short-Term Adolescent Support
- Transition to Adult Services
- Transitional Assistance
- Workforce Readiness & Employment

## Senior Vice President of Business & Finance:

Michael Matthews, CPA

Business/Finance Group  
 Information Technology Group  
 Facilities Engineering Group

## President's Cabinet

Dr. Kathleen M. Jordan, DHA  
President/CEO

Sophie Santaella, MBA  
Executive VP/COO

Michael Matthews, CPA,  
Senior VP of Business & Finance

Kathleen A. Myshrall,  
VP of Advancement

William C. Stock,  
VP for Government & Community Relations

Marilyn Lopez-Haddad, JD, SPHR,  
SHRM-SCP, VP of Human Resources

## Senior Leadership

Joseph A. Allred, JD, MS

Cynthia Andrews, MSN

Leslie Courtney, MPA, LEND

Anne Fine, LICSW

Sharon Goldberg, MHA, CBIS

Timothy Johnson, MBA

Robert J. Leonard

James Regan

Marissa Ruff, MS

## Affiliates

Seven Hills ASPIRE!

Seven Hills Behavioral Health

Seven Hills Community Services

Seven Hills Family Services

Seven Hills Global Outreach

Seven Hills NeuroCare

Seven Hills New Hampshire

Seven Hills Pediatric Center

Seven Hills Rhode Island

Children's Aid & Family Service

Children's Friend

Family Services of Central Massachusetts

Open Door Arts

Stetson School

YOU, Inc.